

TEAM AIR TREATMENT CANOPY

(CTC2 VERSION WITH ROTATING NOZZLE ARM)



Features

- Single rotating nozzle for improved tuber coverage
- Proven reliable design
- Cost saving
- Improved **Health and Safety**
- Ease of use
- The canopy reduces chemical loss and can help to achieve **COSH standards**
- Internal drain channels to eliminate chemical 'run-off'

Standard Fittings	Optional Extras
<ul style="list-style-type: none"> • Single variable speed rotating nozzle • Air flow fans (to force liquid at target) • Transformer for air fans (240V – 12V) • Spray and fan on/off switching • Rubber curtains (entry and exit) • Removable viewing windows • Nozzle pipe work and fittings • Internal drain channels to eliminate chemical 'run-off' • Polished inner surface 	<ul style="list-style-type: none"> • Standard treatment widths: 600 – 760 – 900 – 1000 or 1200mm (other widths can be specified) • Automatic spray on/off sensing

Canopy	Nozzles	Pump source	Controls
Fibreglass (GRP) (various widths to suit roller table)	Single hollow cone with anti drip check-valve	Storemaster applicator range	Removable control box with spray on/off and nozzle rotation switching

The new *CTC 2* air treatment canopy is a significant advance in potato seed treatment technology, achieving consistent, even and accurate application of treatments to all tubers, enabling seed producers to assure the best possible results from the product used. The canopy features a unique rotating nozzle system which directs the spray to give an all round coverage of the seed tuber. Airflow fans assist in delivering the spray pattern onto the tubers.



TEAM STOREMASTER POTATO (liquid applicator)



Features

- Proven reliability
- Powerful 20L/min 240V twin diaphragm pump
- Meets all application rates and through put requirements
- Powerful tank agitation
- Compact skid chassis design
- Easy access suction filter
- Large tank access
- Powder coated welded steel chassis
- Bigger tanks available on request

Standard Fittings	Optional Extras
<ul style="list-style-type: none"> • 75Ltr main tank • Pressure regulation and gauge • Tank agitation • 240V twin diaphragm pump unit • 2 Triple nozzles with mounting brackets, hose and spray tips to suit application rate • Spray or liquid return valve 	<ul style="list-style-type: none"> • Larger tank sizes • Automatic spray on/off remote control (single phase only) • Air canopy for roller table application • 3-phase pump motor • Wheels • Additional nozzle kits

Tank	Nozzles	Pump	Controls
Impact resistant Polythene 75Ltr	Triple nozzles assemblies with anti drip check valves	20 ltr/min, 240 volt, twin diaphragm	Manual pressure regulation with gauge

The Team Storemaster Potato applicator has been designed for applying liquid formulations to potatoes going in or out of store over a roller table. The powerful 240 Volt twin diaphragm pump has an output of 20 L/min, which will meet all throughput requirements and still provide good liquid agitation within the tank.



Developments in Potato tuber application

Syngenta are hoping to launch fludioxonil in the UK in the near future. As potato seed treatment is a new area for Syngenta we reviewed the equipment available and concluded it was inconsistent in its quality. Like all other potato seed treatments fludioxonil is dependent on coverage and loading for maximum activity. Syngenta in conjunction with Team Sprayers have spent the past 2 years developing the Team Storemaster CTC2.

% Target loading of FDL on potato tubers

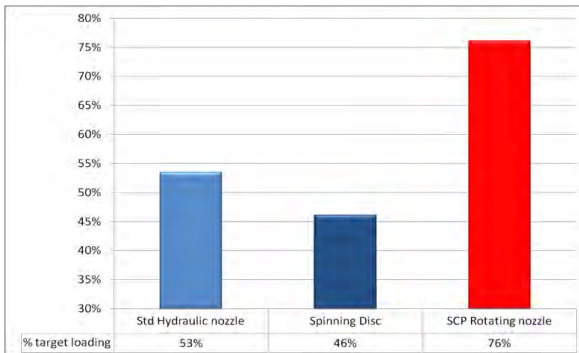


Fig1: The effects on coverage of the CTC system are clear when tuber loading is analysed. Both Hydraulic nozzles and spinning

Individual Tuber Loading mg/kg

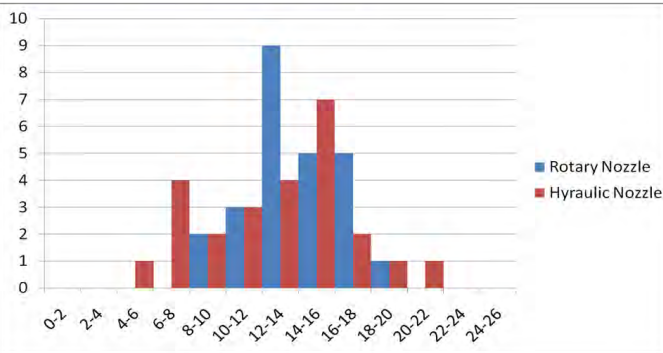


Fig 2: The new rotary nozzle gives a much tighter treatment range. This helps cut out under and overdosing of tubers giving the best efficacy possible in the field.



This is revolutionary step forward in potato seed treatment equipment. The Storemaster CTC2 not only increases loading and coverage but provides some useful features to help reduce and eradicate operator. The rotary nozzle element of the CTC2 design has increased loading by a minimum of 50% over the other methods currently available.

TEAM STOREMASTER CTC 2

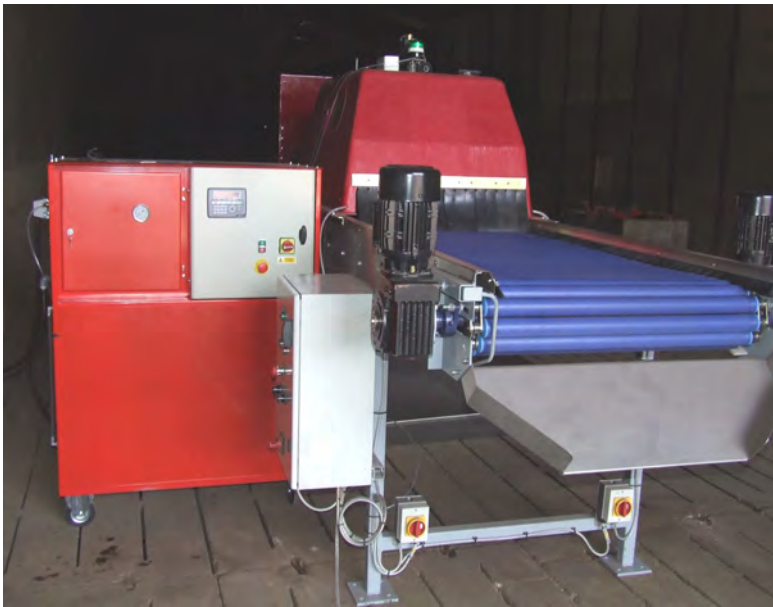
Complete Treatment Centre

The new Storemaster 'CTC 2' application system is a significant advance in potato seed treatment technology. Achieving far more consistent, even and accurate application of seed treatments to all tubers, enabling seed producers to assure the best possible results from the product used. The Treatment canopy features a unique rotating nozzle which directs the spray to give an all round coverage of the seed tuber. Airflow fans assist in delivering the spray pattern onto the tubers.



Liquid applicator — Key features

- Standard Storemaster 75Ltr liquid applicator
- Manually adjustable chemical injection system
- Heated chemical store
- Clean water system flushing
- 12Ltr chemical storage tank
- Quick coupled electrics and spray hoses
- Chassis mounted on castor wheels for maneuverability



Treatment canopy — Key features

- Variable width treatment canopy
- Manually adjustable 'Rotary nozzle' speed spray delivery system Air flow fans
- Automatic spray 'on/off' remote control
- Removable inspection windows
- Drain channels to eliminate chemical 'run-off'
- Rubber curtains (exit & entry)
- Improved Health & Safety and COSH standards

